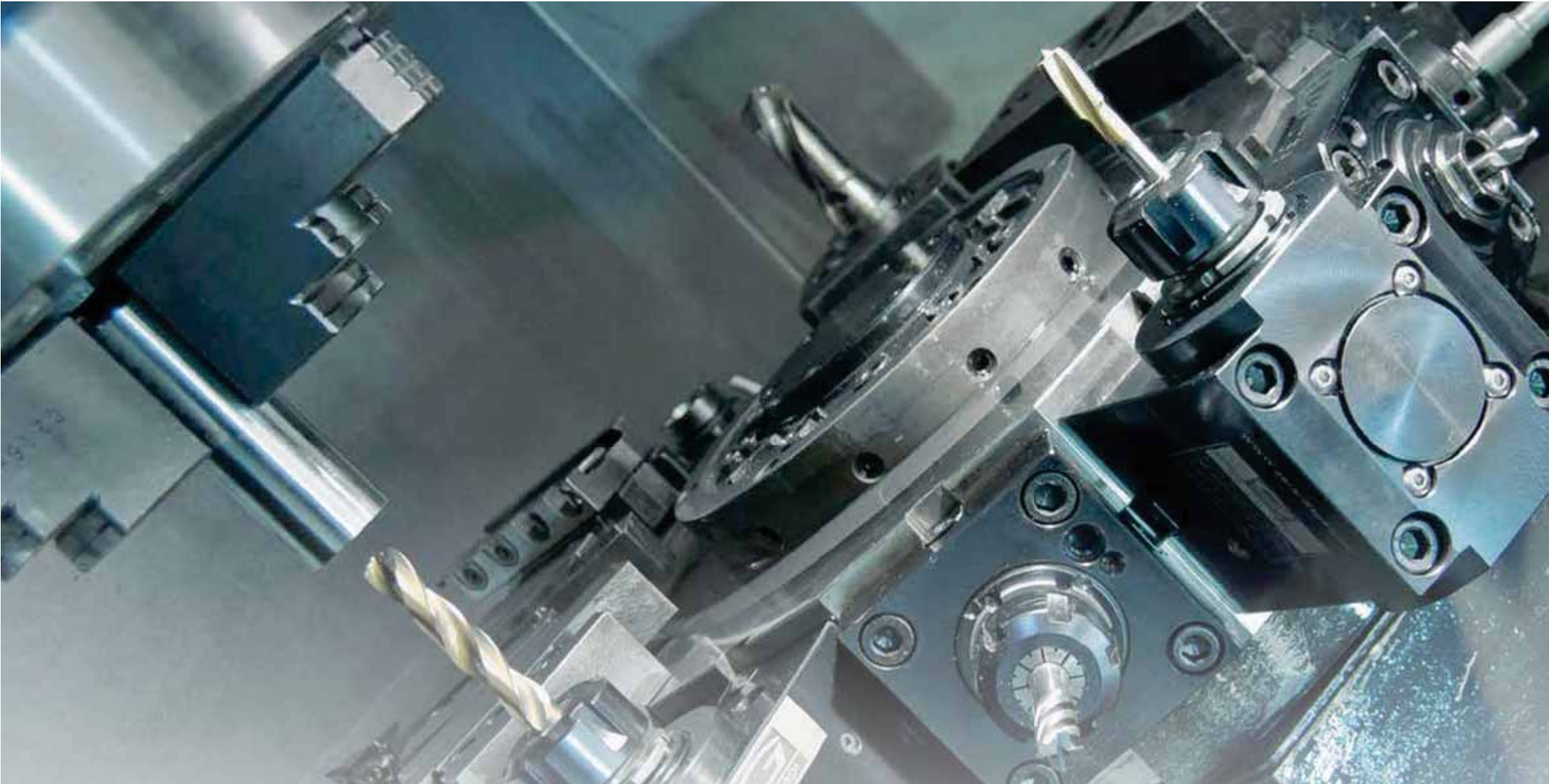




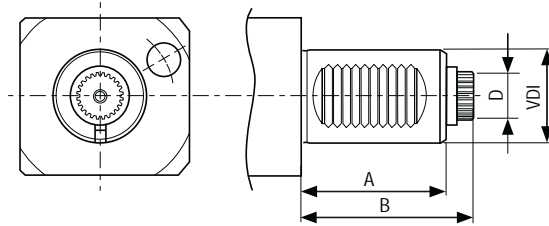
GERARDI
DRIVEN TOOLS





Turret Series:

■ VDI - DIN 5480



VDI	A	B	D
20	35	51	10,8
25	48	57	13,8
30	55	67	15,8
40	63	75	19,8
50	78	93	23,8



AX
Assiale - Axial



RD
Radiale - Radial



Off AX
Disassato - Off-set axis



RO
Arretrato - Rear Off-set



2U
Radiale 2 uscite
Radial 2 outputs



UN
Regolabile ± 90° - Adjustable

Code	Orient	VDI	Rotation	Output	Int. Cool.	Nm	Rpm	H
99.ST.8001	AX	20	▼	ER-20	-	13	6000	60
99.ST.8002	AX	25	▼	ER-20	-	20	6000	60
99.ST.8003	AX	30	▼	ER-25	-	32	5000	66
99.ST.8004	AX	30	▼	ER-25	-	32	5000	94
99.ST.8005	AX	40	▼	ER-32	-	63	4000	95
99.ST.8006	AX	40	▼	ER-32	-	63	4000	115
99.ST.8007	AX	50	▼	ER-40	-	100	4000	88
99.ST.8008	AX	50	▼	ER-40	-	100	4000	120
99.ST.8009	AX	20	▼	ER-20	● 25bar	13	6000	89
99.ST.8010	AX	25	▼	ER-20	● 25bar	20	6000	89
99.ST.8011	AX	30	▼	ER-25	● 25bar	32	5000	66
99.ST.8012	AX	30	▼	ER-25	● 25bar	32	5000	94
99.ST.8013	AX	40	▼	ER-32	● 25bar	63	4000	95
99.ST.8014	AX	40	▼	ER-32	● 25bar	63	4000	115
99.ST.8015	AX	50	▼	ER-40	● 25bar	100	4000	120
99.ST.8016	AX	50	▼	ER-40	● 25bar	100	4000	155
99.ST.8017	AX	20	▼	ER-16	-	3,5	24.000 (1:4)	98,5
99.ST.8018	AX	25	▼	ER-16	-	5	24.000 (1:4)	98,5
99.ST.8019	AX	30	▼	ER-16	-	8	20.000 (1:4)	100
99.ST.8020	AX	40	▼	ER-20	-	16	16.000 (1:4)	112,5
99.ST.8021	AX	50	▼	ER-20	-	25	16.000 (1:4)	128,5
99.ST.8022	AX	20	▼	PF-Ø16	-	13	6000	110,5
99.ST.8023	AX	25	▼	PF-Ø16	-	20	6000	110,5
99.ST.8024	AX	30	▼	PF-Ø22	-	32	5000	112

Code	Orient	VDI	Rotation	Output	Int. Cool.	Nm	Rpm	H
99.ST.8025	AX	40	▼	PF-Ø22	-	13	4000	102
99.ST.8026	AX	50	▼	PF-Ø22	-	20	4000	138
99.ST.8027	AX	50	▼	PF-Ø27	-	32	4000	138
99.ST.8028	RD	20	▼	ER-20	-	13	6000	75
99.ST.8029	RD	25	▼	ER-20	-	20	6000	75
99.ST.8030	RD	30	▼	ER-25	-	32	5000	55
99.ST.8031	RD	30	▼	ER-25	-	32	5000	85
99.ST.8032	RD	30	▼	ER-25	-	32	5000	100
99.ST.8033	RD	40	▼	ER-32	-	63	4000	100
99.ST.8034	RD	40	▼	ER-32	-	63	4000	120
99.ST.8035	RD	50	▼	ER-40	-	100	4000	110
99.ST.8036	RD	20	▼	ER-20	● 25bar	13	6000	75
99.ST.8037	RD	25	▼	ER-20	● 25bar	20	6000	75
99.ST.8038	RD	30	▼	ER-25	● 25bar	32	5000	55
99.ST.8039	RD	30	▼	ER-25	● 25bar	32	5000	85
99.ST.8040	RD	30	▼	ER-25	● 25bar	32	5000	100
99.ST.8041	RD	40	▼	ER-32	● 25bar	63	4000	100
99.ST.8042	RD	40	▼	ER-32	● 25bar	63	4000	120
99.ST.8043	RD	50	▼	ER-40	● 25bar	100	4000	110
99.ST.8044	RO	20	▼	ER-20	-	13	6000	75
99.ST.8045	RO	25	▼	ER-20	-	20	6000	75
99.ST.8046	RO	30	▼	ER-25	-	32	5000	85
99.ST.8047	RO	30	▼	ER-25	-	32	5000	100
99.ST.8048	RO	40	▼	ER-32	-	63	4000	100



Code	Orient	VDI	Rotation	Output	Int Cool.	Nm	Rpm	H
99.ST.8049	RO	50	▼	ER-40	-	100	4000	110
99.ST.8050	RO	20	▼	ER-20	● 25bar	13	6000	75
99.ST.8051	RO	25	▼	ER-20	● 25bar	20	6000	75
99.ST.8052	RO	30	▼	ER-25	● 25bar	32	5000	85
99.ST.8053	RO	30	▼	ER-25	● 25bar	32	5000	100
99.ST.8054	RO	40	▼	ER-32	● 25bar	63	4000	100
99.ST.8055	RO	50	▼	ER-40	● 25bar	100	4000	110
99.ST.8056	RO	20	▼	ER-16	-	3,5	24.000 (1:4)	90
99.ST.8057	RO	25	▼	ER-16	-	5	24.000 (1:4)	90
99.ST.8058	RO	30	▼	ER-16	-	8	21.000 (1:4)	95
99.ST.8059	RO	40	▼	ER-20	-	16	16.000 (1:4)	125
99.ST.8060	RO	50	▼	ER-20	-	25	16.000 (1:4)	135
99.ST.8061	RD	20	▼	ER-20	-	26	3000 (2:1)	75
99.ST.8062	RD	25	▼	ER-20	-	40	3000 (2:1)	75
99.ST.8063	RD	30	▼	ER-25	-	63	2500 (2:1)	55
99.ST.8064	RD	30	▼	ER-25	-	63	2500 (2:1)	85
99.ST.8065	RD	30	▼	ER-25	-	63	2500 (2:1)	100
99.ST.8066	RD	40	▼	ER-32	-	63	2000 (2:1)	100
99.ST.8067	RD	40	▼	ER-32	-	63	2000 (2:1)	120
99.ST.8068	RD	50	▼	ER-40	-	100	2000 (2:1)	110
99.ST.8069	RD	20	▼	PF-Ø16	-	26	3000 (2:1)	75

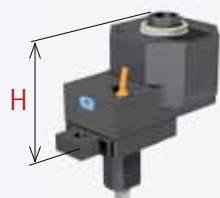
Code	Orient	VDI	Rotation	Output	Int. Cool.	Nm	Rpm	H
99.ST.8070	RD	25	▼	PF-Ø16	-	40	3000 (2:1)	75
99.ST.8071	RD	30	▼	PF-Ø22	-	63	2500 (2:1)	55
99.ST.8072	RD	30	▼	PF-Ø22	-	63	2500 (2:1)	85
99.ST.8073	RD	30	▼	PF-Ø22	-	63	2500 (2:1)	100
99.ST.8074	RD	40	▼	PF-Ø22	-	63	2000 (2:1)	100
99.ST.8075	RD	40	▼	PF-Ø22	-	63	2000 (2:1)	120
99.ST.8076	RD	50	▼	PF-Ø27	-	100	2000 (2:1)	110
99.ST.8077	2U	20	▼	ER-20-20	-	13	6000	75
99.ST.8078	2U	25	▼	ER-20-20	-	20	6000	75
99.ST.8079	2U	30	▼	ER-25-25	-	32	5000	85
99.ST.8080	2U	30	▼	ER-25-25	-	32	5000	100
99.ST.8081	2U	40	▼	ER-32-32	-	63	4000	100
99.ST.8082	2U	40	▼	ER-32-32	-	63	4000	120
99.ST.8087	UN ±90°	30	▼	ER-30	● 25bar	15	5000	64
99.ST.8088	UN ±90°	30	▼	ER-20	● 25bar	15	5000	55
99.ST.8089	UN ±90°	40	▼	ER-25	● 25bar	25	4000	63
99.ST.8090	UN ±90°	50	▼	ER-40	● 25bar	50	4000	78
99.ST.8091	UN ±90°	30	▼	ER-20	● 25bar	15	5000	64
99.ST.8092	UN ±90°	30	▼	ER-20	● 25bar	15	5000	97
99.ST.8093	UN ±90°	40	▼	ER-25	● 25bar	25	4000	81

- ▼ Direction of rotation opposite of machine spindle
- ▼ Direction of rotation same as machine spindle
- Internal Coolant

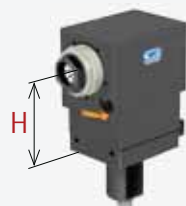
Turret series:
■ VDI - DIN 5480



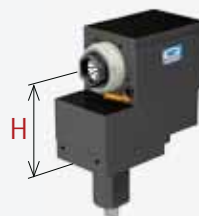
AX
Assiale - Axial



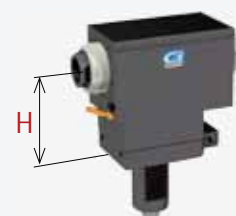
Off-AX
Assiale disassato - Off-set axis



RD
Radiale - Radial



RO
Arretrato - Rear Off-set



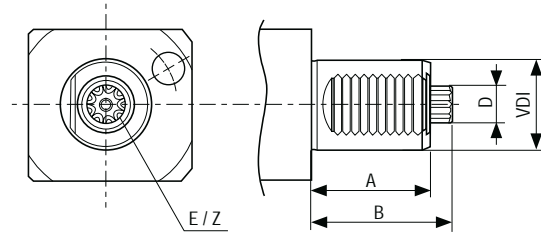
2U
Doppia uscita - Double output



UN
Regolabile ±90° - Adjustable

Turret Series:

■ VDI - DIN 5482



VDI	A	B	D
30	45	55	14,5
40	53	63	16,5
50	78	93	19,5
60	94	108	24,5



AX
Assiale - Axial



RD
Radiale - Radial



Off-AX
Disassato- Off-set axis



RO
Arretrato - Rear Off-set



UN
Regolabile ±90° - Adjustable



Code	Orient	VDI	Rotation	Output	Int. Cool.	Nm	Rpm	H
99.ST.8201	AX	30	▼	ER-25	-	32	5000	94
99.ST.8202	AX	30	▼	ER-25	-	32	5000	66
99.ST.8203	AX	40	▼	ER-32	-	63	4000	115
99.ST.8204	AX	40	▼	ER-32	-	63	4000	95
99.ST.8205	AX	50	▼	ER-40	-	100	4000	150
99.ST.8206	AX	60	▼	ER-50	-	160	3200	220
99.ST.8207	AX	30	▼	ER-25	● 25bar	32	5000	91
99.ST.8208	AX	40	▼	ER-32	● 25bar	63	4000	115
99.ST.8209	AX	40	▼	ER-32	● 25bar	63	4000	95
99.ST.8210	AX	50	▼	ER-40	● 25bar	100	4000	133
99.ST.8211	AX	60	▼	ER-50	● 25bar	160	3200	228
99.ST.8212	AX	30	▼	ER-16	-	8	20000	100
99.ST.8213	AX	40	▼	ER-20	-	16	16000	112,5
99.ST.8214	AX	50	▼	ER-20	-	25	16000	128,5
99.ST.8215	AX	30	▼	PF-Ø22	-	32	5000	112
99.ST.8216	AX	40	▼	PF-Ø22	-	63	4000	124
99.ST.8217	RD	30	▼	ER-25	-	32	5000	55
99.ST.8218	RD	30	▼	ER-25	-	32	5000	85
99.ST.8219	RD	30	▼	ER-25	-	32	5000	100

Code	Orient	VDI	Rotation	Output	Int. Cool.	Nm	Rpm	H
99.ST.8220	RD	40	▼	ER-32	-	63	4000	100
99.ST.8221	RD	50	▼	ER-40	-	100	4000	110
99.ST.8222	RD	60	▼	ER-50	-	160	3200	130
99.ST.8223	RD	30	▼	ER-25	● 25bar	32	5000	55
99.ST.8224	RD	30	▼	ER-25	● 25bar	32	5000	85
99.ST.8225	RD	30	▼	ER-25	● 25bar	32	5000	100
99.ST.8226	RD	40	▼	ER-32	● 25bar	63	4000	100
99.ST.8227	RD	50	▼	ER-40	● 25bar	100	4000	110
99.ST.8228	RD	60	▼	ER-50	● 25bar	160	3200	130
99.ST.8229	RO	30	▼	ER-25	-	32	5000	85
99.ST.8230	RO	40	▼	ER-32	-	63	4000	100
99.ST.8231	RO	50	▼	ER-40	-	100	4000	110
99.ST.8232	RO	60	▼	ER-50	-	160	3200	135
99.ST.8233	RO	30	▼	ER-25	● 25bar	32	5000	85
99.ST.8234	RO	40	▼	ER-32	● 25bar	63	4000	100
99.ST.8235	RO	50	▼	ER-40	● 25bar	100	4000	110
99.ST.8236	RO	60	▼	ER-50	● 25bar	160	3200	135
99.ST.8237	RO	30	▼	ER-16	-	8	20000 (1:4)	95
99.ST.8238	RO	40	▼	ER-20	-	16	16000 (1:4)	125



Code	Orient	VDI	Rotation	Output	Int Cool.	Nm	Rpm	H
99.ST.8239	RO	50	▼	ER-20	-	25	16000 (1:4)	135
99.ST.8240	RD	30	▼	ER-25	-	63	2500	55
99.ST.8241	RD	40	▼	ER-32	-	63	2000 (2:1)	100
99.ST.8242	RD	30	▼	PF-Ø22	-	63	2500 (2:1)	55
99.ST.8243	RD	40	▼	PF-Ø22	-	63	2000	100
99.ST.8244	RO	30	▼	PF-Ø22	-	32	2500	85
99.ST.8245	RO	40	▼	PF-Ø22	-	63	4000	100
99.ST.8246	Off-AX	30	▼	ER-25	-	64	3000 (2:1)	95
99.ST.8247	Off-AX	30	▼	PF-Ø22	● 25bar	64	3000 (2:1)	95
99.ST.8248	UN ±90°	30	▼	ER-20	-	15	5000	64
99.ST.8249	UN ±90°	30	▼	ER-20	-	15	5000	97
99.ST.8250	UN ±90°	40	▼	ER-25	-	25	4000	81
99.ST.8251	UN ±90°	50	▼	ER-40	-	50	4000	123
99.ST.8252	UN ±90°	60	▼	ER-40	-	50	4000	123
99.ST.8253	UN ±90°	30	▼	ER-20	● 25bar	15	5000	64
99.ST.8254	UN ±90°	30	▼	ER-20	● 25bar	15	5000	97
99.ST.8255	UN ±90°	40	▼	ER-25	● 25bar	25	4000	81

▼ Direction of rotation opposite of machine spindle

▼ Direction of rotation same as machine spindle

● Internal Coolant

Turret series:

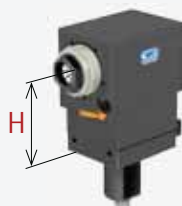
■ VDI - DIN 5482



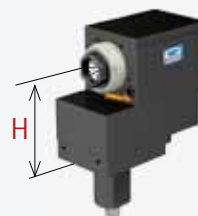
AX
Assiale - Axial



Off-AX
Assiale disassato - Off-set axis



RD
Radiale - Radial



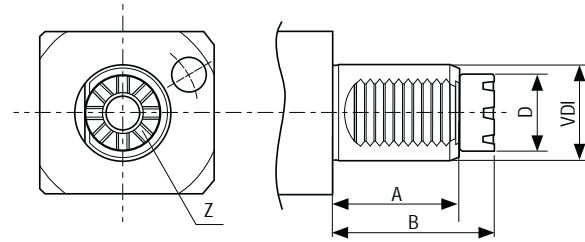
RO
Arretrato - Rear Off-set



UN
Regolabile ±90° - Adjustable

Turret Series:

■ VDI - BARUFFALDI



VDI	A	B	D
20	35	41	19
30	45/53	59	24
40	53	68	32
50	70	84	40
60	83	100	43



AX
Assiale - Axial



RD
Radiale - Radial



Off AX
Disassato - Off-set axis



RO
Arretrato - Rear Off-set



2U
Radiale 2 uscite
Radial 2 outputs



UN
Regolabile ± 90° - Adjustable



Code	Orient	VDI	Rotation	Output	Int. Cool.	Nm	Rpm	H
99.BF.0001	AX	20	▼	ER-20	-	13	6000	90
99.BF.0002	AX	20	▼	ER-20	-	13	6000	65
99.BF.0003	AX	30	▼	ER-30	-	32	6000	94
99.BF.0004	AX	30	▼	ER-30	-	32	5000	66
99.BF.0005	AX	40	▼	ER-40	-	63	4000	117
99.BF.0006	AX	40	▼	ER-40	-	63	4000	95
99.BF.0007	AX	50	▼	ER-50	-	100	4000	120
99.BF.0008	AX	50	▼	ER-50	-	100	4000	88
99.BF.0009	AX	60	▼	ER-60	-	160	3200	170
99.BF.0010	AX	30	▼	ER-25	● 25bar	32	5000	94
99.BF.0011	AX	40	▼	ER-32	● 25bar	63	4000	115
99.BF.0012	AX	40	▼	ER-40	● 25bar	63	4000	95
99.BF.0013	AX	50	▼	ER-50	● 25bar	100	4000	120
99.BF.0014	AX	60	▼	ER-60	● 25bar	160	3200	170
99.BF.0015	AX	20	▼	ER-16	-	3	24.000 (1:4)	100
99.BF.0016	AX	30	▼	ER-16	-	8	20.000 (1:4)	100
99.BF.0017	AX	40	▼	ER-20	-	16	16.000 (1:4)	112,5
99.BF.0018	AX	30	▼	PF-Ø22	-	32	5000	112
99.BF.0019	AX	40	▼	PF-Ø22	-	63	4000	124
99.BF.0020	RD	20	▼	ER-20	-	13	6000	60
99.BF.0021	RD	30	▼	ER-25	-	32	6000	55
99.BF.0022	RD	30	▼	ER-25	-	32	5000	85
99.BF.0023	RD	30	▼	ER-25	-	32	5000	100
99.BF.0024	RD	40	▼	ER-32	-	63	4000	100

Code	Orient	VDI	Rotation	Output	Int. Cool.	Nm	Rpm	H
99.BF.0025	RD	50	▼	ER-40	-	100	4000	110
99.BF.0026	RD	60	▼	ER-50	-	160	3200	130
99.BF.0027	RD	30	▼	ER-25	● 25bar	32	5000	55
99.BF.0028	RD	30	▼	ER-25	● 25bar	32	5000	85
99.BF.0029	RD	30	▼	ER-25	● 25bar	32	5000	100
99.BF.0030	RD	40	▼	ER-32	● 25bar	63	4000	100
99.BF.0031	RD	50	▼	ER-40	● 25bar	100	4000	110
99.BF.0032	RD	60	▼	ER-50	● 25bar	160	3200	130
99.BF.0033	RO	20	▼	ER-16	-	13	6000	75
99.BF.0034	RO	30	▼	ER-25	-	32	5000	85
99.BF.0035	RO	40	▼	ER-32	-	63	4000	100
99.BF.0036	RO	50	▼	ER-40	-	100	4000	110
99.BF.0037	RO	30	▼	ER-25	● 25bar	32	5000	85
99.BF.0038	RO	40	▼	ER-32	● 25bar	63	4000	100
99.BF.0039	RO	50	▼	ER-40	● 25bar	100	4000	110
99.BF.0040	RO	20	▼	ER-16	-	3	24000 (1:4)	75
99.BF.0041	RO	30	▼	ER-16	-	8	20000 (1:4)	95
99.BF.0042	RO	40	▼	ER-20	-	16	16000 (1:4)	125
99.BF.0043	RD	30	▼	ER-25	-	63	2500	55
99.BF.0044	RD	40	▼	ER-32	-	63	2000	100
99.BF.0045	RO	30	▼	PF-Ø22	-	63	2500	55
99.BF.0046	RO	40	▼	PF-Ø22	-	63	2000	100
99.BF.0047	RO	30	▼	PF-Ø22	-	32	5000	85
99.BF.0048	RO	40	▼	PF-Ø22	-	63	4000	100



Code	Orient	VDI	Rotation	Output	Int Cool.	Nm	Rpm	H
99.BF.0049	Off-AX	30	▼	ER-25	-	64	3000	95
99.BF.0050	Off-AX	30	▼	PF-Ø22	-	64	3000	95
99.BF.0051	UN ±90°	30	▼	ER-20	-	15	5000	64
99.BF.0052	UN ±90°	30	▼	ER-30	-	15	5000	97
99.BF.0053	UN ±90°	40	▼	ER-40	-	25	4000	81
99.BF.0054	UN ±90°	30	▼	ER-30	● 25bar	15	5000	64
99.BF.0055	UN ±90°	30	▼	ER-30	● 25bar	15	5000	97
99.BF.0056	UN ±90°	40	▼	ER-40	● 25bar	25	4000	81
99.BF.0057	RD	30	▼	ER-25	-	32	5000	55
99.BF.0058	RD	30	▼	ER-25	-	32	5000	85

Code	Orient	VDI	Rotation	Output	Int Cool.	Nm	Rpm	H
99.BF.0059	RD	30	▼	ER-25	-	32	5000	100
99.BF.0060	RD	50	▼	ER-40	-	100	4000	110
99.BF.0061	RD	30	▼	ER-25	● 25bar	32	5000	55
99.BF.0062	RD	30	▼	ER-25	● 25bar	32	5000	85
99.BF.0063	RD	30	▼	ER-25	● 25bar	32	5000	100
99.BF.0064	RD	50	▼	ER-40	● 25bar	100	4000	110
99.BF.0065	Off AX	30	▼	ER-25	-	64	3000 (2:1)	95
99.BF.0066	Off AX	30	▼	PF Ø22	-	64	3000 (2:1)	95
99.BF.0067	2U	30	▼	ER-25	-	32	5000	110
99.BF.0068	2U	30	▼	ER-40	-	100	4000	140

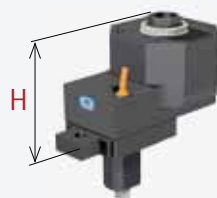
- ▼ Direction of rotation opposite of machine spindle
- ▲ Direction of rotation same as machine spindle
- Internal Coolant

Turret series:

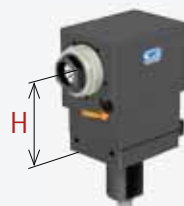
■ VDI - BARUFFALDI



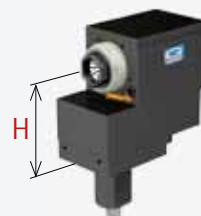
AX
Assiale - Axial



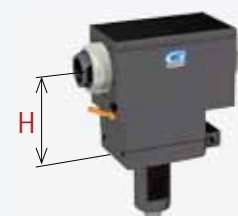
Off-AX
Assiale disassato - Off-set axis



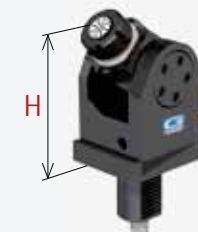
RD
Radiale - Radial



RO
Arretrato - Rear Off-set



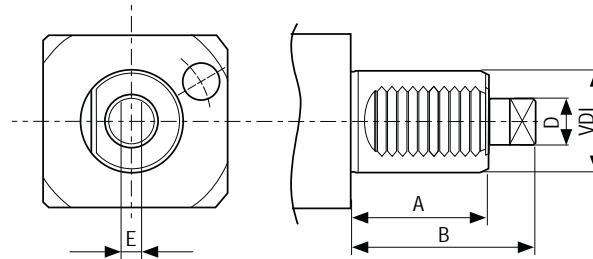
2U
Doppia uscita - Double output



UN
Regolabile ±90° - Adjustable

Turret Series:

■ VDI - DIN 1809



VDI	A	B	D	E
20	35	48	10	5
30	45	62	12	6
40	53	72	18	8
50	78	92	24	13
60	83	110	29	14



AX
Assiale - Axial



RD
Radiale - Radial



Off-AX
Disassato- Off-set axis



RO
Arretrato - Rear Off-set



UN
Regolabile ±90° - Adjustable



Code	Orient	VDI	Rotation	Output	Int. Cool.	Nm	Rpm	H
99.DP.0901	AX	20	▼	ER-20	-	13	6000	65
99.DP.0902	AX	20	▼	ER-20	-	13	6000	90
99.DP.0903	AX	30	▼	ER-25	-	32	5000	94
99.DP.0904	AX	30	▼	ER-25	-	32	5000	66
99.DP.0905	AX	40	▼	ER-32	-	63	4000	115
99.DP.0906	AX	40	▼	ER-32	-	63	4000	95
99.DP.0907	AX	50	▼	ER-40	-	100	4000	120
99.DP.0908	AX	50	▼	ER-40	-	100	4000	88
99.DP.0909	AX	60	▼	ER-50	-	160	3200	170
99.DP.0910	AX	30	▼	ER-25	● 25bar	32	5000	94
99.DP.0911	AX	40	▼	ER-32	● 25bar	63	4000	115
99.DP.0912	AX	40	▼	ER-32	● 25bar	63	4000	95
99.DP.0913	AX	50	▼	ER-40	● 25bar	100	4000	120
99.DP.0914	AX	60	▼	ER-50	● 25bar	160	3200	170
99.DP.0915	AX	20	▼	ER-16	-	3	24.000 (1:4)	100
99.DP.0916	AX	30	▼	ER-16	-	8	20.000 (1:4)	100

Code	Orient	VDI	Rotation	Output	Int. Cool.	Nm	Rpm	H
99.DP.0917	RO	20	▼	ER-16	-	3	24.000 (1:4)	75
99.DP.0918	RD	20	▼	ER-20	-	13	6000	60
99.DP.0919	RD	30	▼	ER-25	-	32	5000	55
99.DP.0920	RD	30	▼	ER-25	-	32	5000	85
99.DP.0921	RD	30	▼	ER-25	-	32	5000	100
99.DP.0922	RD	40	▼	ER-32	-	63	4000	100
99.DP.0923	RD	50	▼	ER-40	-	100	4000	110
99.DP.0924	RD	60	▼	ER-50	-	160	3200	130
99.DP.0925	RD	30	▼	ER-25	● 25bar	32	5000	55
99.DP.0926	RD	30	▼	ER-25	● 25bar	32	5000	85
99.DP.0927	RD	30	▼	ER-25	● 25bar	32	5000	100
99.DP.0928	RD	40	▼	ER-32	● 25bar	63	4000	100
99.DP.0929	RD	50	▼	ER-40	● 25bar	100	4000	110
99.DP.0930	RD	60	▼	ER-50	● 25bar	160	3200	130
99.DP.0931	RO	20	▼	ER-16	-	13	6000	75
99.DP.0932	RO	30	▼	ER-25	-	32	5000	85



Code	Orient	VDI	Rotation	Output	Int. Coolant	Nm	Rpm	H
99.DP.0933	RO	40	▼	ER-32	-	63	4000	100
99.DP.0934	RO	50	▼	ER-40	-	100	4000	110
99.DP.0935	RO	30	▼	ER-25	● 25bar	32	5000	85
99.DP.0936	RO	40	▼	ER-32	● 25bar	63	4000	100
99.DP.0937	RO	50	▼	ER-40	● 25bar	100	4000	110
99.DP.0938	Off-AX	30	▼	ER-25	-	64	3000 (2:1)	95
99.DP.0939	Off-AX	30	▼	PF-22	● 25bar	64	3000 (2:1)	95
99.DP.0940	UN	30	▼	ER-20	-	15	5000	64
99.DP.0941	UN	30	▼	ER-20	-	15	5000	97
99.DP.0942	UN	40	▼	ER-25	-	25	4000	81
99.DP.0943	UN	30	▼	ER-20	● 25bar	15	5000	64
99.DP.0944	UN	30	▼	ER-20	● 25bar	15	5000	97
99.DP.0945	UN	40	▼	ER-25	● 25bar	25	4000	81

▼ Direction of rotation opposite of machine spindle

▼ Direction of rotation same as machine spindle

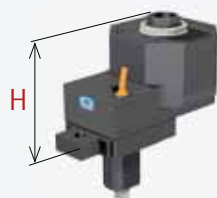
● Internal Coolant

Turret series:

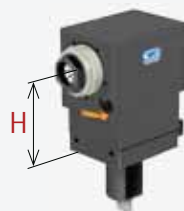
■ VDI - DIN 1809



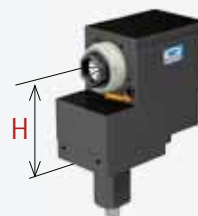
AX
Assiale - Axial



Off-AX
Assiale disassato - Off-set axis



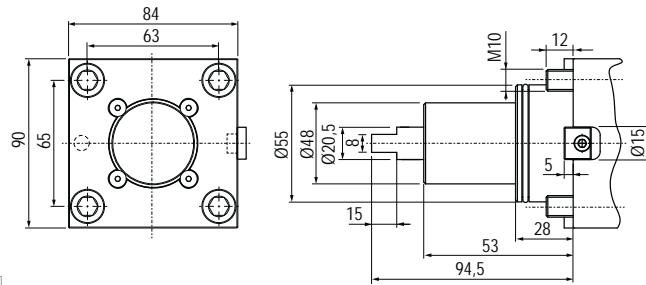
RD
Radiale - Radial



RO
Arretrato - Rear Off-set



UN
Regolabile ±90° - Adjustable



Turret Series:

■ **BMT55**

B501-Y / B301 / B470 / B455 / B510 /
B550 / B650 / B658 / 1200



AX
Assiale - Axial



RD
Radiale - Radial



Off AX
Disassato - Off-set axis



RO
Arretrato - Rear Off-set



AX 2U
Assiale 2 uscite
Axial 2 outputs



RD 2U
Radiale 2 uscite
Radial 2 outputs



UN
Regolabile ± 90° - Adjustable



Code	Orient	Rotation	Output	Int. Coolant	Nm	Rpm	H
99.BG.B01.A	AX	▼	ER-25	-	-	4000	63,5
99.BG.B01.B	AX	▼	ER-25	-	-	4000	75
99.BG.B01.C	AX	▼	ER-25	-	-	4000	53,5
99.BG.B01.D	AX	▼	ER-25	● 20bar	-	4000	63,5
99.BG.B01.E	AX	▼	ER-25	● 20bar	-	4000	75
99.BG.B02.A	AX	▼	ER-32	-	-	4000	83,5
99.BG.B02.B	AX	▼	ER-32	-	-	4000	71,5
99.BG.B02.C	AX	▼	ER-32	-	-	4000	59
99.BG.B02.D	AX	▼	ER-32	● 20bar	-	4000	83,5
99.BG.B02.E	AX	▼	ER-32	● 20bar	-	4000	71,5
99.BG.B04.A	RD	▼	ER-25	-	47	4000	70
99.BG.B04.B	RD	▼	ER-25	● 20bar	47	4000	70
99.BG.B04.C	RD	▼	ER-25	-	47	4000	100
99.BG.B04.D	RD	▼	ER-25	● 20bar	47	4000	100
99.BG.B04.E	RD	▼	ER-25	-	47	8000 (1:2)	70
99.BG.B04.F	RD	▼	ER-25	-	47	2000 (2:1)	70

Code	Orient	Rotation	Output	Int. Coolant	Nm	Rpm	H
99.BG.B05.A	RD	▼	ER-32	-	47	4000	70
99.BG.B05.B	RD	▼	ER-32	● 20bar	47	4000	70
99.BG.B05.C	RD	▼	ER-32	-	47	4000	100
99.BG.B05.D	RD	▼	ER-32	● 20bar	47	4000	100
99.BG.B06.A	AX 2U	▼	ER-16-16	-	-	4000	84
99.BG.B06.B	AX 2U	▼	ER-20-20	-	-	4000	87
99.BG.B06.C	AX 2U	▼	ER-25-25	-	-	4000	88
99.BG.B07.A	RD 2U	▼	ER-32-25	-	47	4000	70
99.BG.B07.B	RD 2U	▼	ER-32-25	-	47	4000	100
99.BG.B08.A	RD 2U	▼	ER-25-25	-	47	4000	70
99.BG.B08.B	RD 2U	▼	ER-25-25	-	47	4000	100
99.BG.B09.A	RD 2U	▼	ER-25-16	-	47	4000	70
99.BG.B09.B	RD 2U	▼	ER-25-16	-	47	4000	100
99.BG.B10	UN 0-90°	▼	ER-20	-	-	4000	140
99.BG.B11	UN 0-180°	▼	ER-16	-	-	4000	111
99.BG.B12	UN	▼	ER-20	-	-	4000	87



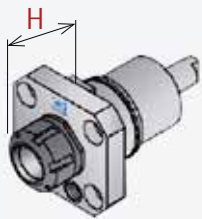
Code	Orient	Rotation	Output	Int. Coolant	Nm	Rpm	H
99.BG.B14	Off AX	▼	ER-25	-	-	8000 (1:2)	92,5
99.BG.B14.A	Off AX	▼	ER-16	-	-	8000 (1:2)	75
99.BG.B14.B	Off AX	▼	ER-16	● 20bar	-	8000 (1:2)	85
99.BG.B15.A	AX	▼	PF-Ø16	-	-	4000	86,5
99.BG.B15.B	AX	▼	PF-Ø22	-	-	4000	92
99.BG.B15.C	AX	▼	PF-Ø27	-	-	4000	94
99.BG.B15.D	AX	▼	PF-Ø10	-	-	4000	94,5
99.BG.B15.E	AX	▼	PF-Ø13	-	-	4000	94,5
99.BG.B15.F	AX	▼	PF-Ø10	-	-	4000	82,5
99.BG.B15.G	AX	▼	PF-Ø13	-	-	4000	82,5
99.BG.B16.A	AX	▼	PF-Ø16	● 20bar	-	4000	76,5
99.BG.B16.B	AX	▼	PF-Ø22	● 20bar	-	4000	80
99.BG.B17.A	RD	▼	PF-Ø16	-	47	4000	70
99.BG.B17.B	RD	▼	PF-Ø16	-	47	4000	100
99.BG.B17.C	RD	▼	PF-Ø22	-	47	4000	70

Code	Orient	Rotation	Output	Int. Coolant	Nm	Rpm	H
99.BG.B17.D	RD	▼	PF-Ø22	-	47	4000	100
99.BG.B17.E	RD	▼	PF-Ø27	-	47	4000	70
99.BG.B17.F	RD	▼	PF-Ø27	-	47	4000	100
99.BG.B17.G	RD	▼	PF-Ø16	-	-	2000 (2:1)	70
99.BG.B17.H	RD	▼	PF-Ø22	-	-	2000 (2:1)	70
99.BG.B17.I	RD	▼	PF-Ø27	-	-	2000 (2:1)	70
99.BG.B17.L	RD	▼	PF-Ø10	-	-	4000	70
99.BG.B17.M	RD	▼	PF-Ø13	-	-	4000	70
99.BG.B17.N	RD	▼	PF-Ø10	-	-	4000	100
99.BG.B17.O	RD	▼	PF-Ø13	-	-	4000	100
99.BG.B19.A	AX	▼	WE-25	● 20bar	-	4000	73
99.BG.B19.B	AX	▼	WE-20	● 20bar	-	4000	68
99.BG.B19.C	AX	▼	WE-16	● 20bar	-	4000	61

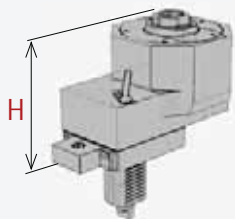
- ▼ Direction of rotation opposite of machine spindle
- ▼ Direction of rotation same as machine spindle
- Internal Coolant

Turret series:

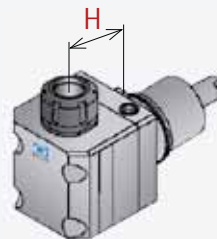
■ BMT55 - B501-Y / B301 / B470 / B455 / B510 / B550 / B650 / B658 / 1200



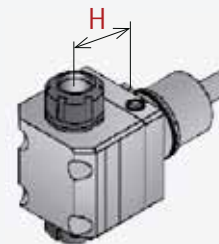
AX
Assiale - Axial



Off-AX
Assiale disassato - Off-set axis



RD
Radiale - Radial



2U
Doppia uscita - Double output



UN
Regolabile ±90° - Adjustable

Turret Series:

NL

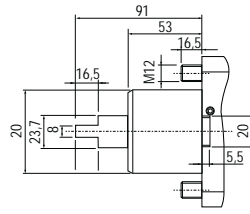
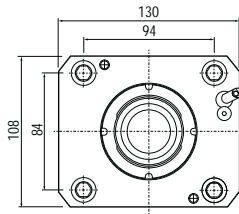
1500 - 2000 - 3000

NZ

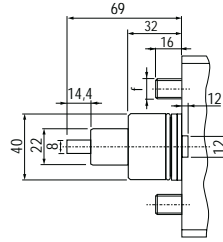
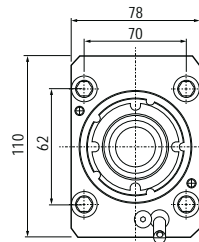
1500 - 2000 - 3100 - 3150 - 3200

SL - ZL - DL

200 - 250MC / SC 203 - 204 - 205 / SC 250Y



NL drawing



NZ drawing



AX
Assiale - Axial



RD
Radiale - Radial



RUD
Radiale rovesciato
Radial upside-down



2U
2 uscite - 2 outputs



UN
Regolabile 0-90° - Adjustable



Code	Orient	Rotation	Output	Int. Coolant	Nm	Rpm	H
99.MS.A59	AX	▼	ER-32	-	60	10.000	Max 89,9
99.MS.A62	AX	▼	ER-40	-	60	10.000	Max 92
99.MS.A60	AX	▼	ER-32	● 80bar	60	10.000	Max 89,9
99.MS.A63	AX	▼	ER-40	● 80bar	60	10.000	Max 92
99.MS.A67	AX	▼	PF-Ø22	-	60	10.000	100
99.MS.A68	AX	▼	PF-Ø27	-	60	10.000	100
99.MS.A72	RD	▼	ER-32	-	60	10.000	90
99.MS.A76	RD	▼	ER-40	-	60	10.000	90
99.MS.A73	RD	▼	ER-32	● 80bar	60	10.000	90
99.MS.A77	RD	▼	ER-40	● 80bar	60	10.000	90
99.MS.A69	RD	▼	PF-Ø22	-	60	10.000	90
99.MS.A70	RD	▼	PF-Ø27	-	60	10.000	90
99.MS.A84	2U	▼ ▼	ER-32-32	-	60	10.000	90
99.MS.A85	2U	▼ ▼	ER-40-40	-	60	10.000	90
99.MS.A86	UN	▼	ER-25	-	25	10.000	78
99.MS.A87	UN	▼	ER-25	● 80bar	25	10.000	78

Code	Orient	Rotation	Output	Int. Coolant	Nm	Rpm	H
99.MS.A101	AX	▼	ER-25	-	50	12.000	84,3
99.MS.A103	AX	▼	ER-32	-	50	12.000	89,2
99.MS.A102	AX	▼	ER-25	● 100bar	50	12.000	84,3
99.MS.A104	AX	▼	ER-32	● 100bar	50	12.000	89,2
99.MS.A105	AX	▼	PF-Ø22	-	50	12.000	100
99.MS.A108	RD	▼	ER-32	-	50	12.000	85
99.MS.A109	RD	▼	ER-32	● 100bar	50	12.000	85
99.MS.A106	RD	▼	ER-25	-	50	12.000	85
99.MS.A107	RD	▼	ER-25	● 100bar	50	12.000	85
99.MS.A110	RD	▼	PF-Ø22	-	50	12.000	85
99.MS.A115	2U	▼ ▼	ER-25-25	-	50	12.000	85
99.MS.A114	2U	▼ ▼	ER-32-32	-	50	12.000	85
99.MS.A118	UN ±90°	▼	ER-20	-	17	12.000	50
99.MS.A119	UN ±90°	▼	ER-20	● 100bar	17	12.000	50

Code	Orient	Rotation	Output	Int. Coolant	Nm	Rpm	H
99.MS.A28	AX	▼	ER-32	-	70	6000	55,5÷60
99.MS.A29	AX	▼	ER-32	● 80bar	70	6000	55,5÷60
99.MS.A33	RD	▼	ER-32	-	70	6000	55
99.MS.A34	RD	▼	ER-32	● 80bar	70	6000	55
99.MS.A41	RUD	▼	ER-32	-	70	6.000	55
99.MS.A42	RUD	▼	ER-32	● 80bar	70	6.000	55
99.MS.A43	RUD	▼	ER-16	-	8	24.000 (1:4)	55
99.MS.A49	2U	▼ ▼	ER-32-32	-	70	6.000	55
99.MS.A51	2U	▼ ▼	ER-16-16	-	8	24.000 (1:4)	55
99.MS.A55	UN ±90°	▼	ER-20	-	25	6.000	66
99.MS.A56	UN ±90°	▼	ER-20	● 80bar	25	6.000	66

▼ Direction of rotation opposite of machine spindle

▼ Direction of rotation same as machine spindle

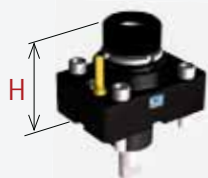
● Internal Coolant

Turret series:

■ NL - 1200 - 2000 - 3000

■ NZ - 1500 - 2000 - 3100 - 3150 - 3200

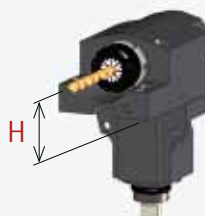
■ SL - ZL - DL 200-250MC / SC 203-204-205 / SC 250Y



AX
Assiale - Axial



RD
Radiale - Radial



RUD
Radiale rovesciato - Radial upside-down



2U
Doppia uscita - Double output



UN
Regolabile ±90° - Adjustable

Turret Series:

■ BMT 45

■ BMT 55

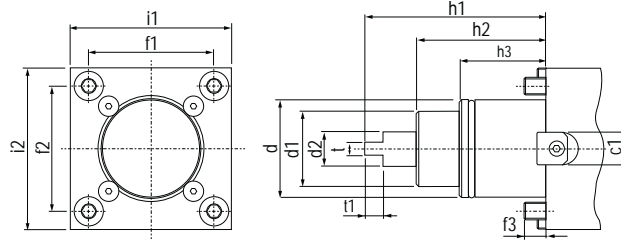
Puma 230 - 240 - 280 M-MS

■ BMT 65

*Puma 300-MS / TT2000 / TT2500
MX2000 / X2500 / VT450 / VT450TM*

■ BMT 75

■ BMT 85



BMT	c1	d	d1	d2	f1	f2	f3	h1	h2	h3	i1	i2	t	t2
45	15	45	35	14	58	58	10	84	60	40	75	75	6	8,5
55	15	55	40	16	64	64	14	104	75	30	85	85	8	8,5
65	18	65	45	18	70	70	15	112	83	32	94	94	10	14
75	25	75	55	23	90	90	15	110	80	43	112	112	14	15
85	25	85	65	33,5	100	100	18	140	100	43	125	125	16	20



AX
Assiale - Axial



RD
Radiale - Radial



Off AX
Disassato - Off-set axis



RUD
Radiale rovesciato
Radial upside-down



2U
2 uscite - 2 outputs



UN
Regolabile ± 90° - Adjustable

Code	Orient	Rotation	Output	Int. Coolant	Nm	Rpm	H
99.DS.A03	AX	▼	ER-25	-	35	8000	Max 57,2
99.DS.A04	AX	▼	ER-25	● 80bar	35	8000	Max 57,2
99.DS.A05	AX	▼	ER-16	-	12	32.000 (1:4)	Max 86,5
99.DS.A06	Off-AX	▼	ER-16	-	15	16.000 (1:2)	70,5
99.DS.A07	RD	▼	ER-25	-	35	8000	65
99.DS.A08	RD	▼	ER-25	● 80bar	35	8000	65
99.DS.A09	RD	▼	ER-16	-	12	32.000 (1:4)	65
99.DS.A10	RD	▼	ER-16	-	15	16.000 (1:2)	65
99.DS.A13	2U	▼ ▼	ER-25-25	-	35	8000	65
99.DS.A14	2U	▼ ▼	ER-16-16	-	3	32.000 (1:4)	65
99.DS.A15	2U	▼ ▼	ER-16-16	-	15	16.000 (1:2)	65
99.DS.A16	UN ±90°	▼	ER-20	-	15	8000	65
99.DS.A17	UN ±90°	▼	ER-20	● 80bar	15	8000	65
99.DS.A01	AX	▼	ER-25	-	40	8000	57,2
99.DS.A02	AX	▼	ER-25	● 80bar	40	8000	57,2
99.DS.A18	AX	▼	ER-16 EF	-	4	24.000 (1:4)	86
99.DS.A19	Off AX	▼	ER-16	-	15	16.000 (1:2)	69

Code	Orient	Rotation	Output	Int. Coolant	Nm	Rpm	H
99.DS.A11	RD	▼	ER-25	-	40	8000	70
99.DS.A12	RD	▼	ER-25	● 80bar	40	8000	70
99.DS.A20	RD	▼	ER-16 EF	-	4	24.000 (1:4)	80
99.DS.A21	RD	▼	ER-16 EF	-	15	16.000 (1:2)	80
99.DS.A24	2U	▼ ▼	ER-25-25	-	40	8000	70
99.DS.A25	2U	▼ ▼	ER-16-16	-	4	24.000 (1:4)	70
99.DS.A26	2U	▼ ▼	ER-16-16	-	15	16.000 (1:2)	70
99.DS.A23	UN ±90°	▼	ER-20	-	15	8000	65
99.DS.A66	UN ±90°	▼	ER-20	● 80bar	15	8000	65
99.DS.A41	AX	▼	ER-32	-	70	6000	72,5
99.DS.A42	AX	▼	ER-32	● 70bar	70	6000	72,5
99.DS.A27	AX	▼	ER-25	-	8	24.000 (1:4)	39,5
99.DS.A28	Off-AX	▼	ER-25 EF	-	35	12.000 (1:2)	100,5±105
99.DS.A51	RD	▼	ER-32	-	70	6000	72
99.DS.A52	RD	▼	ER-32	● 70bar	70	6000	72
99.DS.A29	RD	▼	ER-25	-	8	24.000 (1:4)	72
99.DS.A30	RD	▼	ER-25	-	35	12.000 (1:2)	72

Code	Orient	Rotation	Output	Int. Coolant	Nm	Rpm	H
99.DS.A31	2U	▼ ▼	ER-32-32	-	70	6000	72
99.DS.A32	2U	▼ ▼	ER-25-25	-	8	24.000 (1:4)	72
99.DS.A33	2U	▼ ▼	ER-25-25	-	35	12.000 (1:2)	72
99.DS.A64	UN ±90°	▼	ER-25	-	25	6000	142,5
99.DS.A65	UN ±90°	▼	ER-25	● 70bar	25	6000	142,5
99.DS.A34	AX	▼	ER-40	-	100	6000	Max 90,1
99.DS.A35	AX	▼	ER-40	● 70bar	100	6000	Max 90,1
99.DS.A36	AX	▼	ER-25	-	8	24.000 (1:4)	67
99.DS.A37	Off-AX	▼	ER-25	-	35	12.000 (1:2)	100,5÷105
99.DS.A38	RD	▼	ER-40	-	100	6000	60
99.DS.A39	RD	▼	ER-40	● 70bar	100	6000	60
99.DS.A40	RD	▼	ER-25 EF	-	8	24.000 (1:4)	60
99.DS.A43	RD	▼	ER-25 EF	-	35	12.000 (1:2)	60
99.DS.A44	2U	▼ ▼	ER-40-40	-	100	6000	60

Code	Orient	Rotation	Output	Int. Coolant	Nm	Rpm	H
99.DS.A45	2U	▼ ▼	ER-25-25	-	8	24.000 (1:4)	60
99.DS.A46	2U	▼ ▼	ER-25	-	35	12.000 (1:2)	60
99.DS.A47	UN ±90°	▼	ER-25	-	25	6000	Max 75
99.DS.A48	UN ±90°	▼	ER-25	● 70bar	25	6000	Max 75
99.DS.A50	AX	▼	ER-50	● 70bar	150	3200	Max 119,2
99.DS.A53	AX	▼	ER-32	-	25	12.000 (1:2)	85
99.DS.A54	Off AX	▼	ER-32 EF	-	75	6000	100,5÷110
99.DS.A56	RD	▼	ER-50	● 70bar	150	3200	85
99.DS.A57	RD	▼	ER-50	● 70bar	150	3200	110
99.DS.A58	RD	▼	ER-32 EF	-	25	12.000 (1:4)	85
99.DS.A59	RD	▼	ER-32 EF	-	75	6000 (1:2)	85
99.DS.A60	UN ±90°	▼	ER-32	-	50	4000	167,5
99.DS.A61	UN ±90°	▼	ER-32	● 70bar	50	4000	167,5

▼ Direction of rotation opposite of machine spindle

▼ Direction of rotation same as machine spindle

● Internal Coolant

Turret series:

■ BMT 45

■ BMT 55 Puma 230 - 240 - 280 M-MS

■ BMT 65 Puma 300-MS / TT2000 / TT2500 - MX2000 / X2500 / VT450 / VT450TM

■ BMT 75

■ BMT 85



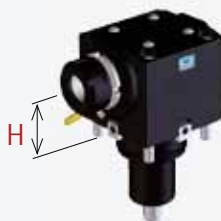
AX

Assiale - Axial



Off-AX

Assiale disassato - Off-set axis



RD

Radiale - Radial



2U

Doppia uscita - Double output



UN

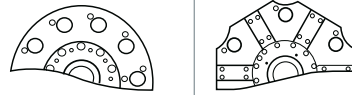
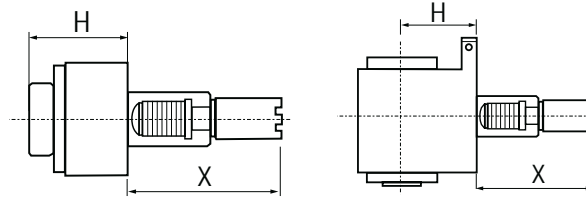
Regolabile ±90° - Adjustable

Turret Series:

■ *Std Vdi40 SL20/30*

■ *Std Vdi40 SL40 - SL20/30*
Hybrid SL20/30 - T115/25
Haas SL20/30

■ *Hybrid SL40*
Haas SL40



X	Vdi 40 Standard Turret		Hybrid Turret		Haas Turret	
	SL 20-30	SL40 ST20/30	SL40 ST15/25	SL40	SL 20-30	SL40
	104,85	117,55	117,55	130,25	117,55	130,55



Code	Orient	Rotation	Output	Int. Coolant	Nm	Rpm	H
99.HA.590083	AX	▼	ER-32	-	63	6000	Max 82,1
99.HA.590083B	AX	▼	ER-32	● 25bar	63	6000	Max 82,1
99.HA.590085	RD	▼	ER-32	-	63	6000	75
99.HA.590085B	RD	▼	ER-32	● 25bar	63	6000	75
99.HA.00U1	UN ±90°	▼	ER-25	-	25	6000	83
99.HA.00U1B	UN ±90°	▼	ER-25	● 25bar	25	6000	83

Code	Orient	Rotation	Output	Int. Coolant	Nm	Rpm	H
99.HA.590082	AX	▼	ER-32	-	63	6000	82,1
99.HA.590082B	AX	▼	ER-32	● 25bar	63	6000	82,1
99.HA.590084	RD	▼	ER-32	-	63	6000	Max. 75
99.HA.590084B	RD	▼	ER-32	● 25bar	63	6000	Max. 75
99.HA.00U2	UN ±90°	▼	ER-25	-	25	6000	83
99.HA.00U2B	UN ±90°	▼	ER-25	● 25bar	25	6000	83

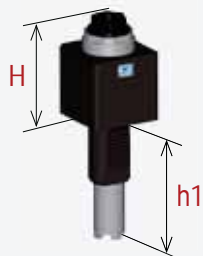


Code	Orient	Rotation	Output	Int. Coolant	Nm	Rpm	H
99.HA.596352	AX	▼	ER-32	-	63	6000	82,1
99.HA.596352B	AX	▼	ER-32	● 25bar	63	6000	82,1
99.HA.596353	RD	▼	ER-32	-	63	6000	75
99.HA.596353B	RD	▼	ER-32	● 25bar	63	6000	75
99.HA.00U3	UN ±90°	▼	ER-25	-	25	6000	83
99.HA.00U3B	UN ±90°	▼	ER-25	● 25bar	25	6000	83

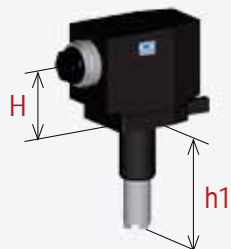
- ▼ Direction of rotation opposite of machine spindle
- ▼ Direction of rotation same as machine spindle
- Internal Coolant

Turret series:

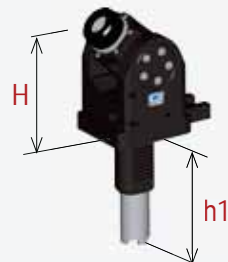
- STD VDI40 - SL20/20
- STD VDI40-SL40/ST20/30 - HYBRID SL20/30 TL15/25 - HAAS SL20/30
- HYBRID SL40 - HAAS SL40



AX
Assiale - Axial



RD
Radiale - Radial



UN
Regolabile ±90° - Adjustable



PRESE DI MOTO INTERCAMBIABILI PER TORRETTE HAAS
INTERCHANGEABLE COUPLINGS FOR THE DIFFERENT HAAS TURRET

Turret Series:

QTN 100

Sqt 10 - 100/150
Qtn 200/250 - Sgt 15/18 - 200/250

QTN 200

Qtn 200/250 - Sgt 15/18 - 200/250

QTN 300

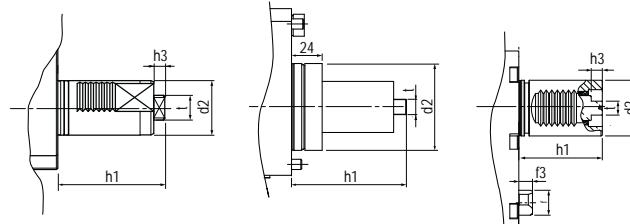
Qtn 300/350/400/450 - Sgt 28/30 - 300

QTS 100

Qts 100M / 200M

HQ

Hyper Quadrex 150My / 200Msy
Multiplex 610 / 615 / 620 / 625 / 6200 / 6250



QTN attachment

QTS attachment

HQ attachment

	d2	h1	h3	t	f	f3
QTN1	Ø40	61	1	10	-	-
QTN2	Ø40	70	8	18	-	-
QTN3	Ø50	75	10	12	-	-
QTS	Ø68	90	-	12	-	-
HQ	Ø40	60	8	10	Ø20	9,8



AX
Assiale - Axial



Off AX
Disassato - Offset axis



RD
Radiale - Radial



RUD
Radiale rovesciato
Radial upside-down



2U
2 uscite - 2 outputs



UN
Regolabile ± 90° - Adjustable



Code	Orient	Rotation	Output	Int. Coolant	Nm	Rpm	H
99.MZ.A40	Off-AX	▼	ER-25	-	63	6000	116,2 ÷ 120
99.MZ.A41	Off-AX	▼	ER-25	● 80bar	63	6000	116,2 ÷ 120
99.MZ.A46	RD	▼	ER-25	-	63	6000	100
99.MZ.A47	RD	▼	ER-25	● 80bar	63	6000	100
99.MZ.A48	RUD	▼	ER-25	-	63	6000	100
99.MZ.A49	RUD	▼	ER-25	● 80bar	63	6000	100
99.MZ.A55	2U	▼ ▼	ER-25-25	-	63	6000	100
99.MZ.A56	UN ±90°	▼	ER-20	-	63	6000	85

Code	Orient	Rotation	Output	Int. Coolant	Nm	Rpm	H
99.MZ.A58	Off-AX	▼	ER-32	-	80	6000	50
99.MZ.A59	Off-AX	▼	ER-32	● 80bar	80	6000	116
99.MZ.A65	RD	▼	ER-32	-	80	6000	130
99.MZ.A66	RD	▼	ER-32	● 80bar	80	6000	130
99.MZ.A67	RUD	▼	ER-32	-	80	6000	130
99.MZ.A68	RUD	▼	ER-32	● 80bar	80	6000	130
99.MZ.A73	2U	▼ ▼	ER-32-32	-	80	6000	130
99.MZ.A74	UN ±90°	▼	ER-25	-	80	6000	85
99.MZ.A64	UN ±90°	▼	ER-25	● 80bar	80	6000	85



Code	Orient	Rotation	Output	Int. Coolant	Nm	Rpm	H
99.MZ.A71	Off-AX	▼	ER-40	-	100	4000	90
99.MZ.A72	Off-AX	▼	ER-40	● 80bar	100	4000	90
99.MZ.A76	Off-AX	▼	ISO-40	-	100	4000	92,5
99.MZ.A79	Off-AX	▼	ISO-40	● 80bar	100	4000	125
99.MZ.A75	RD	▼	ER-40	-	100	4000	160
99.MZ.A81	RD	▼	ER-40	● 80bar	100	4000	160
99.MZ.A77	RD	▼	ISO-40	-	100	4000	160
99.MZ.A78	RD	▼	ISO-40	● 80bar	100	4000	160
99.MZ.A82	RUD	▼	ER40	-	100	4000	160
99.MZ.A83	RUD	▼	ER-40	● 80bar	100	4000	160
99.MZ.A84	2U	▼ ▲	ER-40	-	100	4000	160
99.MZ.A80	UN ±90°	▼	ER-32	-	100	4000	85

Code	Orient	Rotation	Output	Int. Coolant	Nm	Rpm	H
99.MZ.A03	AX	▼	ER-32	-	60	6000	Max 70
99.MZ.A06	AX	▼	ER-32	● 80bar	60	6000	Max 70
99.MZ.A09	RD	▼	ER-32	-	60	6000	80
99.MZ.A10	RD	▼	ER-32	● 80bar	60	6000	80
99.MZ.A13	2U	▼ ▲	ER-32-32	-	70	6000	80
99.MZ.A14	UN ±90°	▼	ER-25	-	30	6000	80
99.MZ.A15	UN ±90°	▼	ER-25	● 80bar	30	6000	80
99.MZ.A31	Off-AX	▼	ER-25	● 80bar	50	6000	116
99.MZ.A37	RD	▼	ER-25	● 80bar	50	6000	115
99.MZ.A35	2U	▼ ▲	ER-25-25	-	50	6000	115

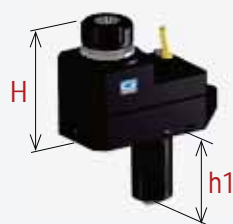
- ▼ Direction of rotation opposite of machine spindle
- ▲ Direction of rotation same as machine spindle
- Internal Coolant

Turret series:

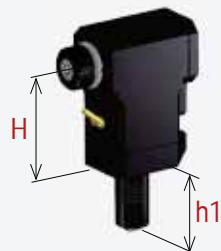
- Quick turn nexus 100
- Quick turn nexus 200 / 250
- Quick turn nexus 300 / 350 / 400 / 450
- Quick turn SMART 100M / 200M
- Hyper Quadrex 150My / 200Msy / Multiplex 610 / 615 / 620 / 625 / 6200 / 6250



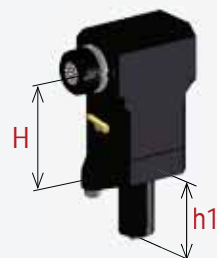
AX
Assiale - Axial



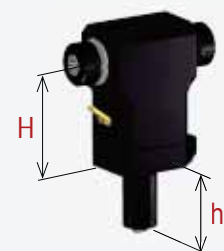
OFF AX
Assiale disassato - Off-set axis



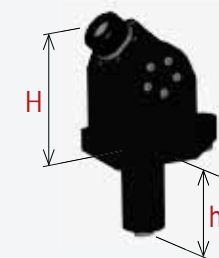
RD
Radiale - Radial



RUD
Radiale rovesciato - Radial upside-down



2U
Doppia uscita - Double output



UN
Regolabile ±90° - Adjustable

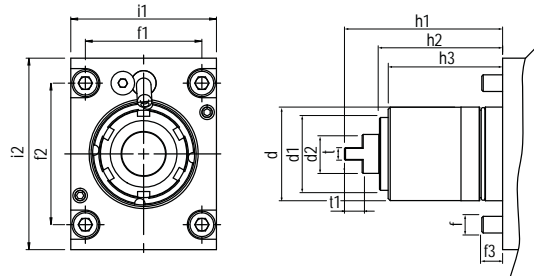
Turret Series:

■ Ø45

ABX 51/64 TH2/TH3
BNE 34/42 - BNJ 42/51

■ Ø54

ABX 51/64 THY - ABX 51/64 SYY



	d	d1	d2	f	f1	f2	f3	h1	h2	h3	i1	i2	t	t1
Ø45	45	35	19	M8	56	68	10	76	59	55	92	70	12	8,5
Ø54	54	-	-	-	75	60	-	72	50	-	90	100	8	-



AX
Assiale - Axial



RD
Radiale - Radial



2U
2 uscite - 2 outputs



UN
Regolabile ± 90° - Adjustable



Code	Orient	Rotation	Output	Int. Coolant	Nm	Rpm	H
99.MY.A02	AX	▼	ER-25	-	35	6000	Max 57,6
99.MY.A03	AX	▼	ER-25	● 80bar	35	6000	Max 57,6
99.MY.A15	AX	▼	ER-32	-	35	6000	64,3
99.MY.A16	AX	▼	ER-32	● 80bar	35	6000	64,3
99.MY.A01	AX	▼	ER-16 EF	-	6	24.000 (1:4)	94,5
99.MY.A14	AX	▼	PF-Ø16	-	35	6000	68,5
99.MY.A05	RD	▼	ER-25	● 80bar	35	6000	65

Code	Orient	Rotation	Output	Int. Coolant	Nm	Rpm	H
99.MY.A06	RD	▼	ER-25	-	35	6000	65
99.MY.A04	RD	▼	ER-16	-	6	24.000 (1:4)	65
99.MY.A17	RD	▼	PF-Ø16	-	35	6000	65
99.MY.A07	2U	▼ ▼	ER-25-25	-	35	6000	65
99.MY.A08	UN ±90°	▼	ER-20	-	15	6000	65
99.MY.A13	UN ±90°	▼	ER-20	● 80bar	15	6000	65

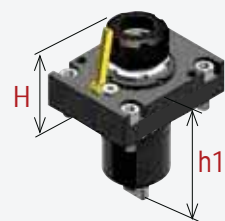


Code	Orient	Rotation	Output	Int. Coolant	Nm	Rpm	H
99.MY.A09	AX	▼	ER-32	-	60	6000	79,4
99.MY.A10	AX	▼	ER-32	● 80bar	60	6000	79,4
99.MY.A11	RD	▼	ER-32	-	60	6000	75
99.MY.A12	RD	▼	ER-32	● 80bar	60	6000	75
99.MY.A18	2U	▼ ▼	ER-32-32	-	60	6000	75
99.MY.A19	UN ±90°	▼	ER-20	-	15	6000	75
99.MY.A20	UN ±90°	▼	ER-20	● 80bar	15	6000	75

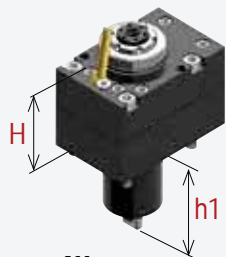
- ▼ Direction of rotation opposite of machine spindle
- ▼ Direction of rotation same as machine spindle
- Internal Coolant

Turret series:

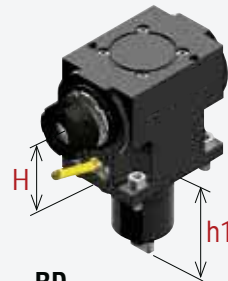
- Ø45 - ABX 51/64 TH2/TH3 - BNE 34/42 - BNJ 42/51
- Ø54 - ABX 51/64 THY - ABX 51/64 SYY



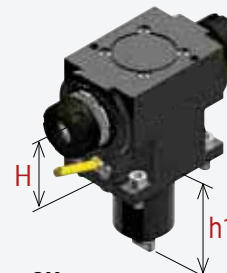
AX
Assiale - Axial



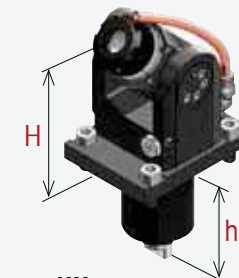
AX
Assiale - Axial



RD
Radiale - Radial



2U
Doppia uscita - Double output



UN
Regolabile ±90° - Adjustable

Turret Series:

BMT44

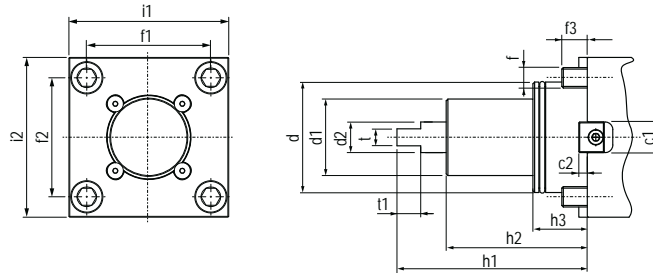
WT100 - NTY3

BMT55

SUPER NTJ-NTJX / NTM3 /
TMC18 / TW10 / SC150-250 /
WT150-250 / WTW 150 / WTS 150

BMT65

TW20 / SC300 / WT300



	c1	c2	d	d1	d2	f	f1	f2	f3	h1	h2	h3	i1	i2	t	t1
BMT44	20	5,5	44	40	15	M8	40	55	12-15	91	63	28	62	79,5	8	12
BMT55	20	5,5	55	50	17	M10	50	60	12-15	108	70	29,5	79	84	8	10
BMT65																



AX
Assiale - Axial



RD
Radiale - Radial



2U
2 uscite - 2 outputs



UN
Regolabile $\pm 90^\circ$ - Adjustable



Code	Orient	Rotation	Output	Int. Coolant	Nm	Rpm	H
99.NK.A40	AX	▼	ER-25	-	40	6000	57,2
99.NK.A43	AX	▼	ER-25	● 70bar	40	6000	57,2
99.NK.A50	RD	▼	ER-25	-	40	6000	60
99.NK.A53	RD	▼	ER-25	● 70bar	40	6000	60
99.NK.A30	RD	▼	ER-25	-	40	6000	75
99.NK.A33	RD	▼	ER-25	● 70bar	40	6000	75
99.NK.A70	2U	▼ ▼	ER-25-25	-	40	6000	60
99.NK.A80	2U	▼ ▼	ER-25-25	-	40	6000	75
99.NK.A59	UN $\pm 90^\circ$	▼	ER-16	-	10	6000	68,5
99.NK.A69	UN $\pm 90^\circ$	▼	ER-16	● 70bar	10	6000	68,5

Code	Orient	Rotation	Output	Int. Coolant	Nm	Rpm	H
99.NK.A03	AX	▼	ER-32	-	63	6000	Max 72,2
99.NK.A04	AX	▼	ER-32	● 70bar	63	6000	Max 72,2
99.NK.A13	RD	▼	ER-32	-	63	6000	55
99.NK.A14	RD	▼	ER-32	● 70bar	63	6000	55
99.NK.A23	RD	▼	ER-32	-	63	6000	65
99.NK.A24	RD	▼	ER-32	● 70bar	63	6000	65
99.NK.A15	RD	▼	ER-32	-	63	6000	75
99.NK.A16	RD	▼	ER-32	● 70bar	63	6000	75
99.NK.A71	2U	▼ ▼	ER-32-32	-	63	6000	55



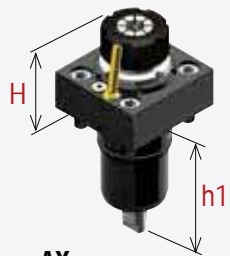
Code	Orient	Rotation	Output	Int. Coolant	Nm	Rpm	H
99.NK.A81	2U	▼ ▼	ER-32-32	-	63	6000	65
99.NK.A91	2U	▼ ▼	ER-32-32	-	63	6000	75
99.NK.A22	UN ±90°	▼	ER-20	-	63	6000	71
99.NK.A32	UN ±90°	▼	ER-20	● 70bar	63	6000	71

Code	Orient	Rotation	Output	Int. Coolant	Nm	Rpm	H
99.NK.A51	AX	▼	ER-32	-	63	6000	Max 77,9
99.NK.A52	AX	▼	ER-32	● 70bar	63	6000	Max 77,9
99.NK.A58	RD	▼	ER-32	-	63	6000	65
99.NK.A62	RD	▼	ER-32	● 70bar	63	6000	65
99.NK.A78	2U	▼ ▼	ER-32-32	-	63	6000	65
99.NK.A82	UN ±90°	▼	ER-25	-	25	6000	80

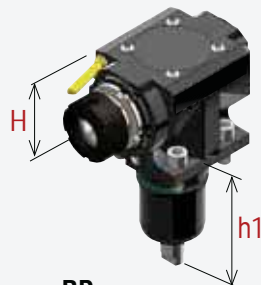
- ▼ Direction of rotation opposite of machine spindle
- ▼ Direction of rotation same as machine spindle
- Internal Coolant

Turret series:

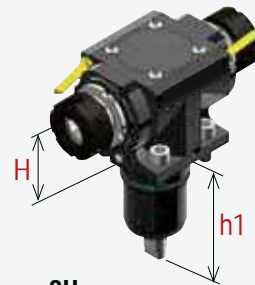
- BMT 44 - WT100 - NTY3
- BMT 55 - SUPER NTJ-NTJX / NTM 3 / TMC 18 / TW 10 / SC150-250 / WT150-250 / WTW 150 / WTS 150
- BMT 65 - TW20 / SC300 / WT300



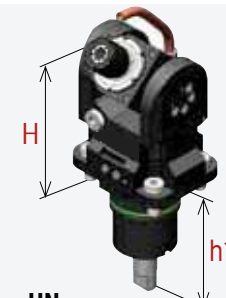
AX
Assiale - Axial



RD
Radiale - Radial



2U
Doppia uscita - Double output



UN
Regolabile ±90° - Adjustable



